



# YOUR PUMP YOUR STYLE YOUR WAY

MiniMed™ Accessories

For greater freedom and better health



**Medtronic**

EVERYONE HAS  
THEIR OWN STYLE  
AND LIKES  
TO WEAR THEIR  
INSULIN PUMP IN  
THEIR OWN WAY

That's why we offer a wide selection of MiniMed™ accessories – so you can wear your pump your way. Designed to suit the lifestyle you lead, 24/7.

PUMP ACCESSORIES

|                        |    |
|------------------------|----|
| CLASSIC                | 4  |
| SPORTS                 | 11 |
| COMFORT                | 16 |
| KIDS                   | 20 |
| OTHER PUMP ACCESSORIES | 26 |
| TAPES & ADHESIVES      | 31 |





# CLASSIC OUR MOST POPULAR CLIPS AND CASES



## NEOPRENE CASE

- Soft, neoprene case fits snugly around pump
- Zipper closure around pump with opening for tubing
- Belt loop and integrated clip for wear on either belt or waistband
- Compatible with all MiniMed™ pumps



ACC-810BK £15.50



ACC-810PL £15.50



ACC-810BL £15.50



ACC-810PINK £15.50





ACC-803BK £20.50

## CLASSIC LEATHER CASE

Classic, black leather case with flap, designed for horizontal pump wear

- Flap with button closure
- Belt loop and integrated clip for wear on either belt or waistband
- Compatible with all MiniMed™ pumps



ACC-410BK £20.50

ACC-410BR £20.50

ACC-410GY £20.50

## TOPWELL LEATHER CASE

Sleek leather cases with viewing window and rotating clip.

- Available in 3 colours: Black, Vintage Grey, Warm Brown
- Rotating clip allows for vertical or horizontal wear on waist
- Viewing window provides easy access to pump screen
- Compatible with all MiniMed™ pumps



ACC-260 £26.00

## DENIM CASE

Lightly padded, denim case holds pump snugly on belt or waistband.

- Belt loop and integrated clip
- Compatible with all MiniMed™ pumps



ACC-310BK £28.50

ACC-310GY £28.50

ACC-310PK £28.50

## BAILEY FLIP CASE

Stylish leatherette cases with innovative flip design allow for easy on-the-go viewing of your pump screen.

- Available in 3 colours: Rose Gold, Black, Slate Grey
- Rotating holster design allows for vertical or horizontal wear
- Compatible with MiniMed™ 640G, 670G & 780G pumps







MiniMed™ Paradigm™  
(5XX & 7XX Series) pump skins



## SILICONE SKINS FOR MINIMED™ PARADIGM™ PUMPS

Soft-to-the-touch silicone skins fit snugly over pump and belt clip

- Mix & match skins to your pump or outfit



MiniMed™ Paradigm™  
(5XX Series) £8.00

- ACC-250BK
- ACC-250BLUE
- ACC-250LTGY
- ACC-250PL

MiniMed™ Paradigm™  
(7XX Series) £8.00

- ACC-251BK
- ACC-251BLUE
- ACC-251LTGY
- ACC-251PL

MiniMed™ 640G,  
670G and 780G  
£8.00

- ACC-822PINK
- ACC-822BL
- ACC-822PL
- ACC-822BK
- ACC-822CL

MiniMed™ 640G, 670G  
and 780G pump skins





ACC-1601 £12.50

### MINIMED™ PUMP CLIP

Pump-matching slim black clip, to be worn on belt or waistband.

- Compatible with MiniMed™ 640G, 670G & 780G pumps

ACC-105 £12.50  
ACC-107 £12.50

### MINIMED™ PARADIGM™ PUMP CLIP



Clear clip lets you easily wear your pump on belt or waistband.

- Hinge allows for easy on-the-go viewing of pump screen
- Clear colour complements any colour pump or outfit
- ACC-105 is compatible with MiniMed™ Paradigm™ 5XX series pump
- ACC-107 is compatible with MiniMed™ Paradigm™ 7XX series pump



MMT-612CL £23.50  
MMT-642CL £23.50

### MINIMED™ PARADIGM™ HOLSTER

Rotating holster to wear your pump on belt or waistband.

- Rotating clip allows for vertical or horizontal pump wear
- Teflon®-infused back plate allows for smooth rotation
- MMT-612CL is compatible with MiniMed™ Paradigm™ 5XX series pump
- MMT-642CL is compatible with MiniMed™ Paradigm™ 7XX series pump

# SPORTS PROTECT YOUR PUMP ON THE MOVE







**ACC-1520** €6.00



**MMT-632 / 641** €6.00

## SPORTS CASE

Durable, padded nylon case with contrast piping

- Zipper closure around pump with opening for tubing
- Belt loop and integrated clip, designed for horizontal wear
- Compatible with all MiniMed™ pumps



**ACC-300GY** €28.50



**ACC-300BL** €28.50



**ACC-300RD** €28.50



**ACC-300PINK** €28.50

## ACTIVITY GUARDS

Snaps over reservoir to prevent it from being removed during activity

- ACC-1520 is compatible with MiniMed™ 640G, 670G and 780G pumps
- MMT-632 is compatible with MiniMed™ Paradigm™ 5xx series pump
- MMT-641 is compatible with MiniMed™ Paradigm™ 7xx series pump







ACC-250 £35.00

## SPORTS WAIST POUCH

Moisture and sweat resistant waist pouch with flap and zipper closure

- Clear viewing window allows for easy access to pump screen
- 132 cm waist belt can be cut to preferred length.
- Compatible with all MiniMed™ pumps



ACC-460 £17.00



## SPIBELT WAIST POUCH

Bounce-free, low-profile waist belt with expandable elastic pocket holds pump snugly against body

- Pass through hold at back of pocket for tubing
- Adjustable waistband with buckle closure, fits sizes 25"-50" (64-127cm)
- Compatible with all MiniMed™ pumps



ACC-8542 / 8543 £46.50

## COOLMAX® SPORT SHIRT

Breathable COOLMAX® fabric sports shirt with 5 integrated pump holding pockets

- Pass through holes in all pockets for tubing
- 95% polyester, 5% elastane
- Compatible with all MiniMed™ pumps



ACC-8551 / 8552 £46.50



# COMFORT KEEP YOUR PUMP CLOSE & CONCEALED



■ ACC-205BK ■ ACC-205BE £28.00

## LEG POUCH

Soft, fabric leg pouch with belt holds pump discreetly on leg or thigh

- Gripper pads on pouch and belt keep pouch from slipping
- 76 cm Velstretch® belt can be cut to preferred length
- Compatible with all MiniMed™ pumps



■ ACC-255BK ■ ACC-255BE £20.00

## WAIST POUCH

Soft pouch with flap slides freely on belt allowing for wear around waist

- 132 cm Velstretch® belt can be cut to preferred length
- Belt secured around waist with hook and loop fastener
- Compatible with all MiniMed™ pumps







■ ACC-258BK ■ ACC-258BE £14.00



■ ACC-210BK ■ ACC-210BE £14.00

## REPLACEMENT BELTS

- 76 cm Velstretch® leg belt can be cut to preferred length\*
- Compatible with all MiniMed™ pumps
- 132 cm Velstretch® waist belt can be cut to preferred length\*
- Compatible with all MiniMed™ pumps

\*Pouch not included



■ ACC-270BK ■ ACC-270BE £19.00

## BRA POUCH

Lace trim, stretch fabric pouch attaches securely to bra

- Snap button tab at back secures pouch to middle or side of bra
- Compatible with all MiniMed™ pumps



■ ACC-501 XSBL / SBL / MBL / LBL / XLBL £22.50  
■ BL ■ BK ■ NU

## DIABETE-EZY™ COMFY BELT

Nylon/Lyrcra waistband stretches for the perfect fit!

- Lies flat against body with double layer pockets that wrap around pump
- Additional pockets can store other items
- Available in sizes XS-XL to fit both children & adults
- Available in Blue, Black and Nude
- Compatible with all MiniMed™ pumps





**KIDS**  
DESIGNED  
WITH  
LITTLE ONES  
IN MIND

**KIDS**



HMS-BAB-BIG-LENNY £50.00

### **LENNY® THE LION LARGE PLUSH TOY**

Large plush Lenny® the Lion toy with 6 practice infusion set sites

- Approximately 56 cm tall
- Compatible with all MiniMed™ pumps





HMS-BAB-SM-LENNY £18.00

## LENNY® THE LION PLUSH & PUMP CARRYING CASE

Plush Lenny® the Lion with zipper pouch at back to hold pump

- Can be used to carry pump during nap time to prevent pump tubing from tangling
- Approximately 32 cm tall
- Compatible with all MiniMed™ pumps



■ ACC-861BL ■ ACC-861PL ■ ACC-861OR £8.00

## LENNY® SILICON SKIN

Convert your child's pump into Lenny® with the silicon special moulded skins.

The silicon skin will fit snugly over your child's MiniMed™ 640G, 670G & 780G pump and belt clip for a great look.





ACC-450 £15.50

## KIDS SPIBELT WAIST POUCH

Bounce-free, low-profile waist belt with expandable elastic pocket holds pump snugly against body

- Pass through hold at back of pocket for tubing
- Adjustable waistband with buckle closure, fits waist sizes 18"-26" (46-66cm)
- Compatible with all MiniMed™ pumps



ACC-845 £45.00

## CHILD'S PUMP HARNESS

The soft harness keeps your child's insulin pump close and safe in a small pocket at the back. It is featured with adjustable shoulder straps.

- Compatible with all MiniMed™ pumps

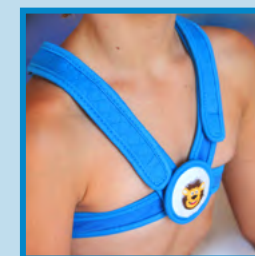


ACC-846BL £45.00

## LENNY® TODDLER PUMP HARNESS

Lenny® soft toddler's harness keeps your little child's insulin pump close and safe in a small pocket at the back. The harness is featured with adjustable shoulder straps.

- Compatible with all MiniMed™ pumps



ACC-8501 / 2 / 3 / 11 / 12 / 13 £24.50

## KIDS LENNY® TANK TOP

Lenny® the Lion cotton tank top features 2 integrated pump pockets with pass through holes for tubing

- Contrast piping adds pop of colour
- 95% cotton, 5% elastane
- Compatible with all MiniMed™ pumps





# OTHER PUMP ACCESSORIES

## OTHER PUMP ACCESSORIES



- ACC-1527 £13.00
- MMT-638B £13.00
- MMT-638H £13.00
- MMT-638L £13.00
- MMT-638P £13.00
- MMT-638S £13.00

### REPLACEMENT BATTERY CAPS

- Available in all pump matching colours
- ACC-1527 compatible with MiniMed™ 640G, 670G and 780G pumps
- MMT-638B/H/L/P/S compatible with MiniMed™ Paradigm™ pumps



- MMT-625EU £4.60
- ACC-LR6 £5.00

### BATTERIES

- 4 pack of Energizer batteries
- MMT-625EU is compatible with MiniMed™ Paradigm™ pump (AAA)
- ACC-LR6 is compatible with MiniMed™ 640G, 670G and 780G pumps (AA)



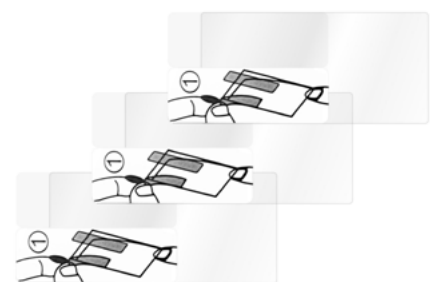


### MINIMED™ STICKER DECAL

Adhesive sticker decal with printed pattern design covers back of pump and belt clip

- Compatible with MiniMed™ 640G, 670G and 780G pumps
- Available in 5 colours: Black, Blue, Purple, Pink, White



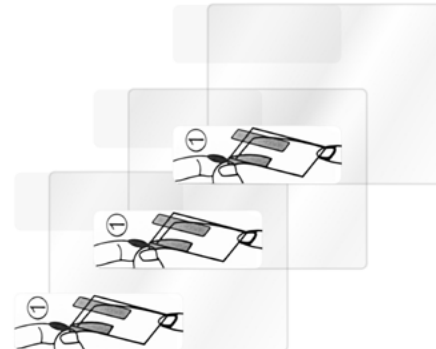


ACC-820 £9.99

## SCREEN FILM KIT

Protect your pump's screen from minor scuffs caused by daily wear and tear

- Kit includes: 3 screen films, cleaning cloth, instructions
- ACC-820: Compatible with MiniMed™ Paradigm™ pumps
- ACC-920: Compatible with MiniMed™ 640G, 670G and 780G pumps



ACC-920 £9.99

# TAPES & ADHESIVES

## SECURE YOUR SITES





## SKIN TAC™ WIPES

Skin Tac wipes help tape adhere to skin at the insertion site.

- Latex-free and hypo-allergenic
- Details: Hypo-allergenic, latex-free
- 50 units per box



HMS-180 £17.00

## IV 3000 TRANSPARENT DRESSING

IV3000 Transparent Dressing is an adhesive film that could be used to cover and protect the sensor and transmitter. Waterproof.

- 100 units per box



MMT-174 £45.00

## TEGADERM™ LATEX-FREE TAPE

Tegaderm's HP latex-free tape provides secure dressing at the insertion site and can withstand different conditions.

- Clear tape dressing
- Continues to adhere well when exposed to moisture
- 100 units per box



HMS-1624W £56.00

MMT-117 £40.00

## SHOWER PAK® – 30 UNITS

Help keep your pump dry while showering with Medtronic's Shower Pak®

- Plastic shower bags
- Wear around neck or hang on the shower head
- Compatible with all MiniMed™ pumps
- 30 bags per package



## TAC AWAY™ ADHESIVE REMOVER WIPES

Tapes and adhesives can leave residue behind. Tac Away adhesive remover wipes help keep skin at the insertion site clean.

- Non-acetone
- 50 units per box



HMS-181 £17.00

## INFUSION SET IV3000 TRANSPARENT DRESSING

Customized c-shape transparent tape, designed to fit around Quick-set™, Silhouette™, Sure-T™ and Mio™ infusion sets

- Made from breathable Reactic™ film
- Waterproof
- 30 units per box



HMS-66800786 £23.00

MMT-134A £25.00

## POLYSKIN II TAPE DRESSING

A transparent dressing cover which can be used to cover the infusion site. It consists of a thin polymer film coated with a hypoallergenic adhesive. A simple, effective delivery system allows one-handed application. It is impermeable to external liquid and micro-organisms and provides better adhesions in moist environments.

- 100 units per box

